

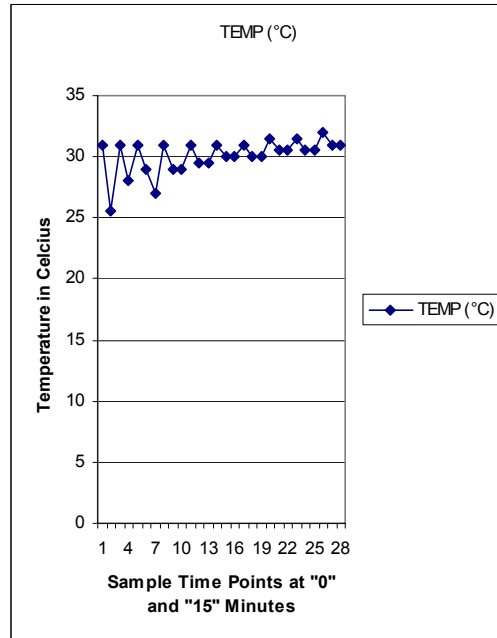
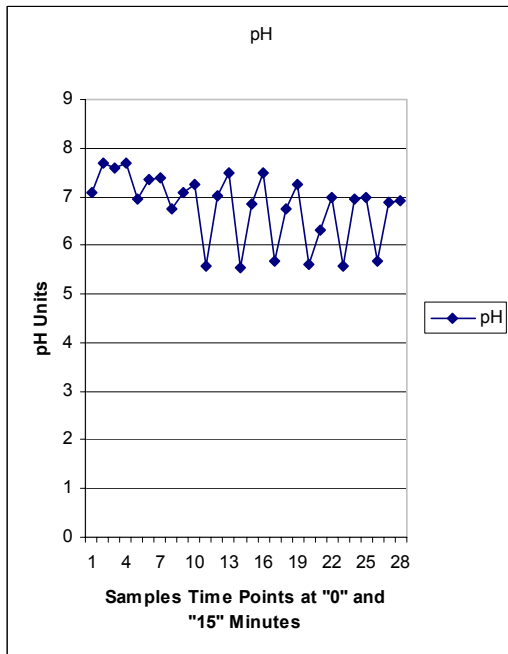
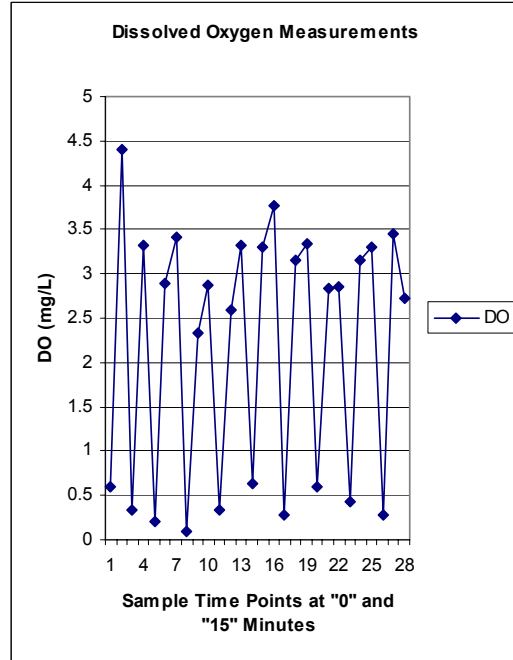


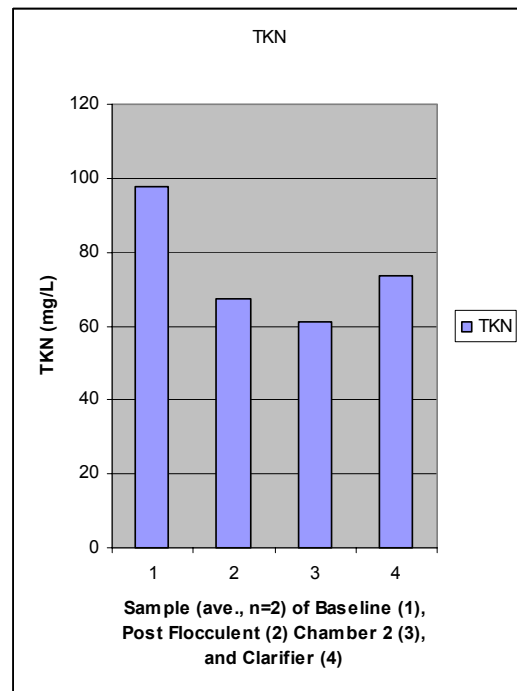
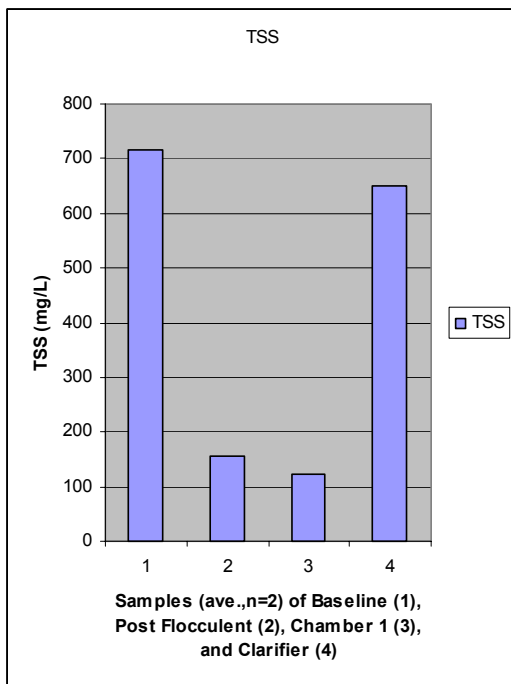
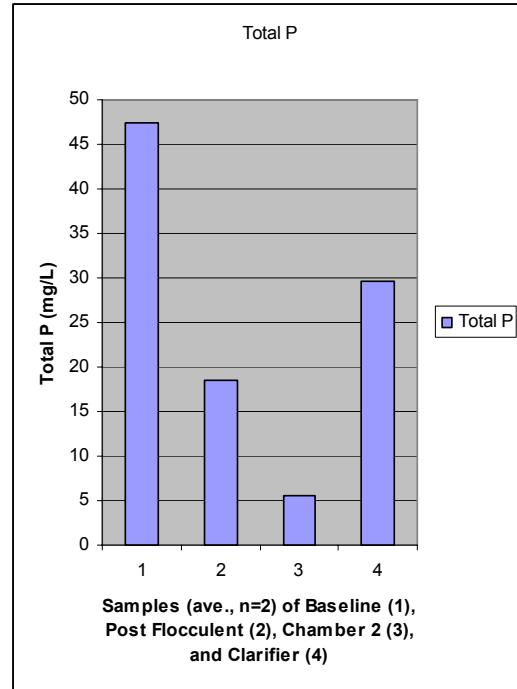
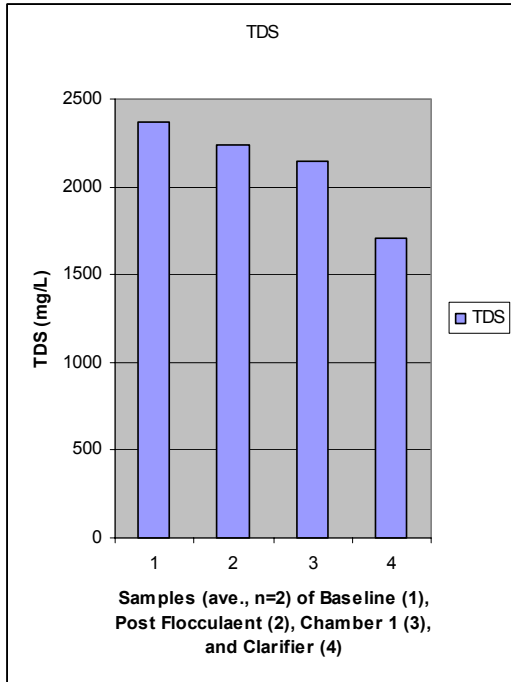
FRENCH FRY MANUFACTURER

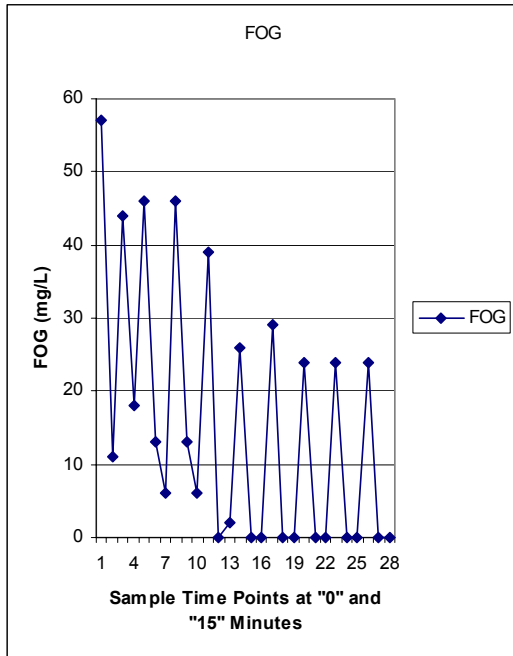
Sample Results From this French Fry manufacturer Pilot Study.

Laboratory tests conducted: COD, TSS, TDS, FOG, Total P, TKN, Temperature, Dissolved Oxygen, and pH. Where possible, these values are compared to the discharge water from the clarifier.

One of the objectives of the pilot study was to determine if selective contaminants could be removed by the EDTI system. Those results are represented in Table 1







Label	Post Floc.	Chamber
pH	X	
D.O.	n.a.	
Temp.	n.a.	
TDS		1
TSS		1
Total P		2
TKN		2
FOG		2
COD		3

Table 1: Relationship of contaminant and point of removal from the EDTI waste water treatment process.

